



VORSICHT!

Wenn Zylinder zusammen mit Zubehör des Wartungssatzes verwendet werden, ist der höchstzulässige Systemdruck auf die Hälfte des maximale Drucks zu begrenzen (350 bar).



WARNUNG!

Verwenden Sie nur die original Enerpac Befestigungen, die mit diesem Set geliefert werden. Befestigungen, die nicht von Enerpac sind, und längere Verlängerungsröhre reduzieren die Festigkeit und Stabilität.

MS Serie



Max. Druckkraft (mit Zubehörteilen):

2,5 - 12,5 t

Max. Betriebsdruck:

350 bar

▼ ANWENDUNGSBEISPIELE





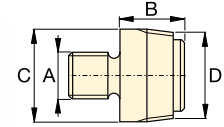
VORSICHT! Wenn Zylinder zusammen mit Zubehör des Wartungssatzes verwendet werden, ist der höchstzulässige Systemdruck auf die Hälfte des max. Drucks zu begrenzen (350 bar).

Hinweis: Alle Abmessungen in mm.

Satz Modell-Nr.	MS24	MSFP5	MSFP10	MS210	MS220	MS21020	
Fuss, Ring und Kolbenzubehör	2,5 t	2,5 t	5,0 t	5,0 t	12,5 t	5,0 - 12,5 t	
Zylinder	RC55	RC55	RC106	RC106	RC256	RC102, 106, 256	
1	A23	A23	A13	A13	A-28	A13, A28	
2	A25	A25	A21	A21	A-27	A21, A27	
3	A1034	A1034	A20	A20	A-595	A20, A595	
4	MZ4010	MZ4010	A14	A14	A-243	A14, A243	
5	A545	A545	A10	A10	-	A10 (2x)	
6	-	-	-	A8	-	A8	
7	A530	A530	A6	A6	-	A6	
8	MZ4011	-	-	A192	-	A192	
9	-	-	-	A305	-	A305	
10	A531	A531	A18	A18	-	A18	
11	-	-	-	A185	-	A185	
12	A532	A532	A15	A15	-	A15	
13	-	-	-	-	A-607	A607	
14	A629	A629	A129	A129	-	A129	
15	A539	A539	A128	A128	-	A128	
Ketten- und Abzugskomponenten	2,5 t	2,5 t	5,0 t	5,0 t	12,5 t	5,0 - 12,5 t	
16	A558	-	-	A132	A238	A132, A238	
17	-	-	-	A5 (2x)	-	A5 (2x)	
18	A557 (2x)	-	-	A141 (2x)	A218 (2x)	A141 (2x), A18 (2x)	
Verlängerungsrohr, Verbindungs- & Zwischenstücke	2,5 t	2,5 t	5,0 t	5,0 t	12,5 t	5,0 - 12,5 t	
19	A544	-	-	A19 (2x)	A242 (2x)	A19 (2x) A242 (2x)	
20	WR5	WR5	WR5	A92	-	A92	
21	MZ4013 (4x)	MZ4013 (4x)	A16 (4x)	A16 (4x)	-	A16 (4x)	
22	MZ4007 (3x)	MZ4007 (3x)	MZ1050 (3x)	MZ1050 (2x)	-	MZ1050 (3x)	
23	MZ4008 (2x)	-	-	MZ1051	-	MZ1051 (2x)	
24	MZ4009	MZ4009	MZ1052	MZ1052	-	MZ1052	
25	-	-	-	A285	-	A285	
26	A650	-	-	-	-	-	
27 Rohrlänge (mm) 76	MZ4002	MZ4002	-	-	-	-	
	127	MZ4003	MZ4003	MZ1002	MZ1002	-	MZ1002
	254	MZ4004	MZ4004	MZ1003	MZ1003	A239	MZ1003
	254						A239
	457	MZ4005 (2x)	MZ4005	MZ1004	MZ1004	A240	MZ1004 (2x)
	457						A240
	584	MZ4006	MZ4006	-	-	-	-
762	-	-	MZ1005	MZ1005	A241	MZ1005 (2x)	
762	-	-	-	-	-	A241	
28 Kaste	CM6	CM6	CW350	CW350	CW350	CW750	
Gewicht (kg)	26	20	48	63	95	158	

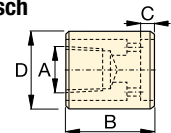
Fuss, Ring und Kolbenzubehör

1 Gewintheadapter



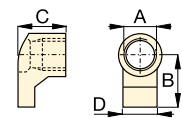
t	Modellnr.	A	B	C	D
2,5	A23	3/4" - 16 UN	28	26	3/4" - 14 NPT
5,0	A13	1" - 8 UN	31	42	1 1/4" - 11 1/2 NPT
12,5	A28	1 1/2" - 16 UN	47	69	2" - 11 1/2 NPT

2 Bodengewindeflansch



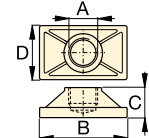
t	Modellnr.	A	B	C	D
2,5	A25	3/4" - 14 NPT	50	12	44
5,0	A21	1 1/4" - 11 1/2 NPT	57	12	65
12,5	A27	2" - 11 1/2 NPT	63	12	98

3 Zylinderaufsatz



t	Modellnr.	A	B	C	D
2,5	A1034	1 1/2" - 16 UN	54	50	31
5,0	A20	2 1/4" - 14 UN	80	57	57
12,5	A595	3 5/16" - 12 UN	103	51	80

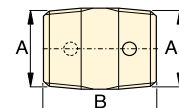
4 Flache Fußplatte



t	Modellnr.	A	B	C	D
2,5	MZ4010	3/4" - 14 NPT	114	31	63
5,0	A14	1 1/4" - 11 1/2 NPT	165	35	88
12,5	A243 *	2" - 11 1/2 NPT	165	58	165

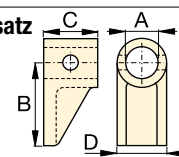
* A243 ist eine runde Fußplatte

5 Gewintheadapter



t	Modellnr.	A	B
2,5	A545	3/4" - 14 NPT	35
5,0	A10	1 1/4" - 11 1/2 NPT	41

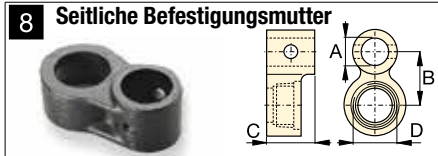
6 Kolbenstangenaufsatz



t	Modellnr.	A	B	C	D
5,0	A8	43	105	50	57



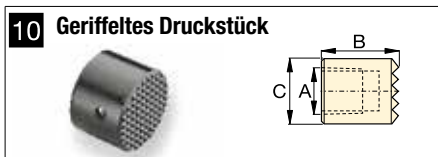
t	Modellnr.	A	B	C	D
2,5	A530	3/4" - 14 NPT	57	25	33
5,0	A6	1 1/4" - 11 1/2 NPT	82	31	57



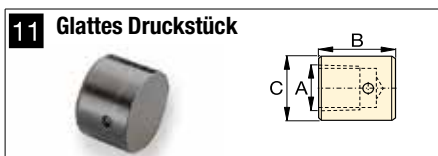
t	Modellnr.	A	B	C	D
2,5	MZ4011	3/4" - 14 NPT	49	76	1 1/2" - 16 UN
5,0	A192	42	63	50	2 1/4" - 14 UN



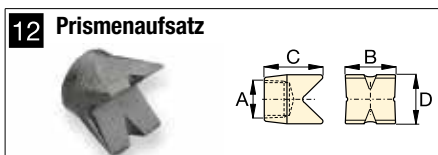
t	Modellnr.	A	B	C	D
5,0	A305	1 1/4" - 11 1/2 NPT	114	25	50



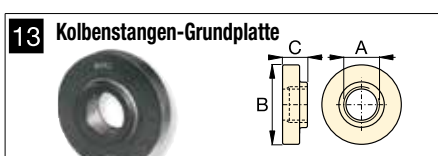
t	Modellnr.	A	B	C
2,5	A531	3/4" - 14 NPT	27	31
5,0	A18	1 1/4" - 11 1/2 NPT	38	50



t	Modellnr.	A	B	C
5,0	A185	1 1/4" - 11 1/2 NPT	38	50



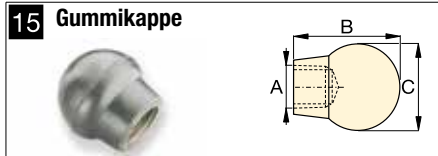
t	Modellnr.	A	B	C	D
2,5	A532	3/4" - 14 NPT	38	47	25
5,0	A15	1 1/4" - 11 1/2 NPT	54	57	54



t	Modellnr.	A	B	C
12,5	A607	2" - 11 1/2 NPT	166	38

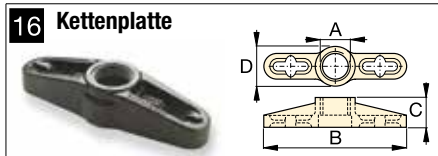


t	Modellnr.	A	B	C	D
2,5	A629	3/4" - 14 NPT	69	33	28
5,0	A129	1 1/4" - 11 1/2 NPT	101	50	44

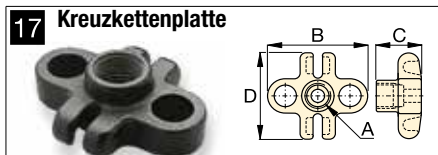


t	Modellnr.	A	B	C
2,5	A539	3/4" - 14 NPT	44	69
5,0	A128	1 1/4" - 11 1/2 NPT	86	86

Ketten- und Abzugskomponenten



t	Modellnr.	A	B	C	D
2,5	A558	1 1/2" - 16 UN	196	39	44
5,0	A132	2 1/4" - 14 UN	307	63	79
12,5	A238	3 5/16" - 12 UN	450	102	125

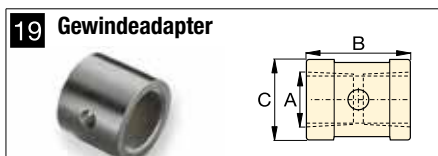


t	Modellnr.	A	B	C	D
5,0	A5	1 1/4" - 11 1/2 NPT	130	50	126

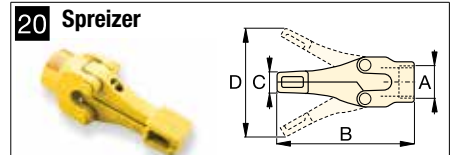


t	Modellnr.	Kettenlänge
2,5	A557	1,5 m
5,0	A141	1,8 m
12,5	A218	2,4 m

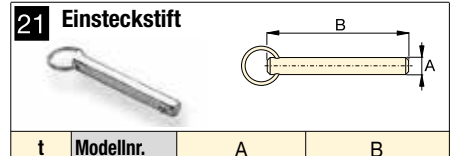
Rohre, Verbindungs- & Zwischenstücke



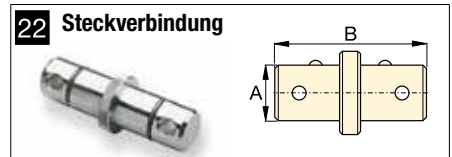
t	Modellnr.	A	B	C
2,5	A544	3/4" - 14 NPT	42	33
5,0	A19	1 1/4" - 11 1/2 NPT	49	54
12,5	A242	2" - 11 1/2 NPT	88	82



t	Modellnr.	A	B	C	D
1,0	WR5	—	223	12,8	94
1,0	A92	2 1/4" - 14 UN	244	35	158



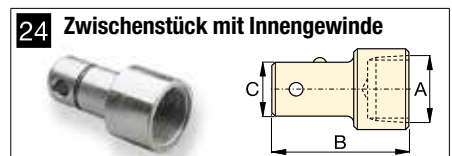
t	Modellnr.	A	B
2,5	MZ4013	7,9	41
5,0	A16	11,2	82



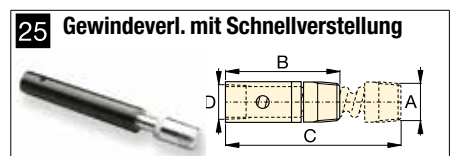
t	Modellnr.	A	B
2,5	MZ4007	19	79
5,0	MZ1050	33	127



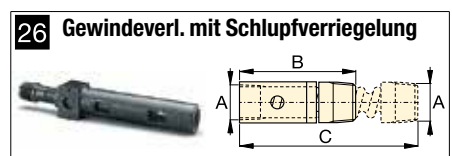
t	Modellnr.	A	B	C
2,5	MZ4008	3/4" - 14 NPT	60	19
5,0	MZ1051	1 1/4" - 11 1/2 NPT	90	33



t	Modellnr.	A	B	C
2,5	MZ4009	3/4" - 14 NPT	65	19
5,0	MZ1052	1 1/4" - 11 1/2 NPT	96	33



t	Modellnr.	A	B	C	D
5,0	A285	1 1/4" - 11 1/2 NPT	335	441	33



t	Modellnr.	A	B	C
2,5	A650	3/4" - 14 NPT	200	365